

## Overview

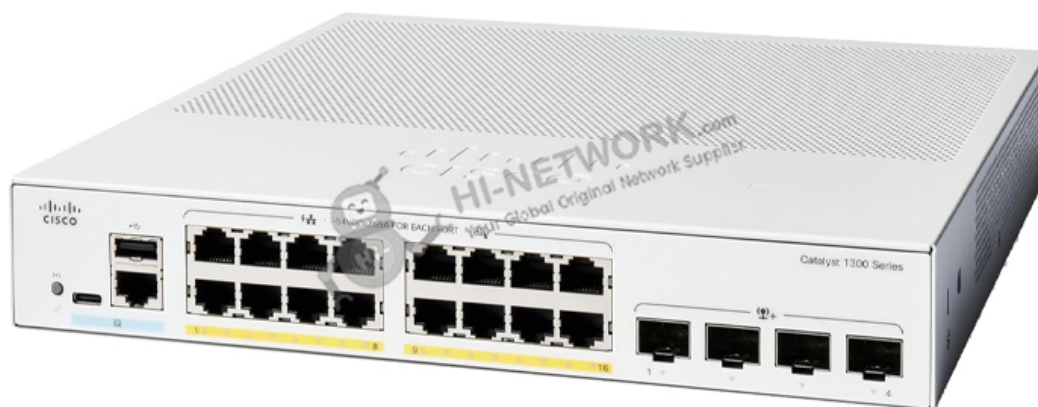
The Cisco C1300-16P-4X is a robust switch designed to cater to the networking needs of modern enterprises. With 16x 10/100/1000 PoE+ ports and a 120W power budget, it ensures seamless connectivity and power delivery to various devices. Additionally, the switch is equipped with 4x 10 Gigabit SFP+ uplink ports for faster data transfers and better network performance.

## Quick Specification

Table 1 shows the quick specification.

Model	C1300-16P-4X
Dimension	268 x 297 x 44 mm (10.56 x 11.69 x 1.73 in)
Weight	2.49 kg (5.49 lb)
Operating Temperature	23° to 122°F (-5° to 50°C)
Operating Humidity	10% to 90%, relative, noncondensing
Ports	16x 10/100/1000 ports PoE+ ports with 120W power budget
Combo Ports	4x 10 Gigabit SFP+
Form Factor	Fixed Configuration

Figure 1 shows the appearance of C1300-16P-4X.





## Product Details

### Product Features

- 16x 10/100/1000 PoE+ ports with 120W power budget
- 4x 10 Gigabit SFP+ uplink ports
- Advanced security features
- Energy-efficient technology
- Compact design suitable for various environments

### Product Applications

- Ideal for small to medium-sized businesses looking to power IP phones, cameras, and access points.
- Suitable for educational institutions needing robust and reliable network infrastructure.
- Perfect for retail environments requiring stable networking solutions for POS systems and surveillance.

### Supported Options

Accessory	Model
Power Adapter	PA-1300-16P-AD
Rack Mount Kit	RMK-1300-16
SFP+ Transceiver	SFP-10G-LR

### Compare to Similar Items

Model	Differences
Cisco C1300-8P-2X	8x PoE+ ports, 2x 10 Gigabit SFP+, 60W power budget
Cisco C3300-24P-4X	24x PoE+ ports, 4x 10 Gigabit SFP+, 370W power budget
Cisco C9200-24P	24x PoE+ ports, 4x 1 Gigabit SFP, 370W power budget

### Get More Information

Do you have any questions about the C1300-16P-4X?

Contact us now via [info@hi-network.com](mailto:info@hi-network.com).



## Specification

C1300-16P-4X Datasheet	
Ports	16x 10/100/1000 ports PoE+ ports with 120W power budget
Combo Ports	4x 10 Gigabit SFP+
Mounting	Rack-mountable
Forwarding Rate	83.32 Mpps
Switching Capacity	112.0 Gbps
Power	100-240V 50-60 Hz, internal, universal
Dimension	268 x 297 x 44 mm (10.56 x 11.69 x 1.73 in)
Weight	2.49 kg (5.49 lb)
Operating Temperature	23° to 122°F (-5° to 50°C)
Operating Humidity	10% to 90%, relative, noncondensing
Console port	Cisco standard RJ-45 console port and USB Type C port
USB port	USB Type C port on the front panel of the switch for easy file and image management as well as console port
Buttons	Reset button
Cabling type	Unshielded Twisted Pair (UTP) Category 5e or better for 1000BASE-T
LEDs	System, Link/Act, PoE, Speed
Flash	512 MB
CPU	ARM dual-core at 1.4 GHz
DRAM	1 GB DDR4
Certifications	UL (UL 62368), CSA (CSA 22.2), CE mark, FCC Part 15 (CFR 47) Class A

## Want to Buy

[Get a Quote](#)

[Learn More](#) about Hi-Network

[Search](#) our Resource Library

[Follow](#) us on LinkedIn

 Contact for [Sales or Support](#)



## Contact HI-NETWORK.COM For Global Fast Shipping

---

HongKong Office Tel: +00852-66181601

HangZhou Office Tel: +0086-571-86729517

Email: [info@hi-network.com](mailto:info@hi-network.com)

Skype: [echo.hinetwork](https://www.skype.com/people/echo.hinetwork)

WhatsApp Business: +8618057156223

